

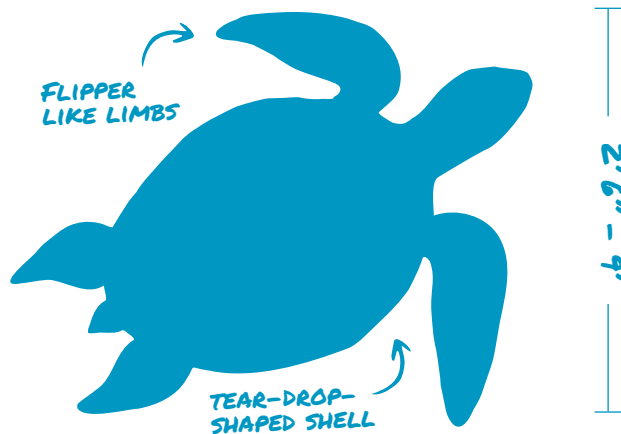
# Sea Turtle

Cheloniidae or Dermochelyidae

Sea turtles are large, air-breathing **marine reptiles**. There are seven species all of which are endangered or threatened.

Sea turtles have a lifespan of **50 - 100 years**.

## What do they look like?



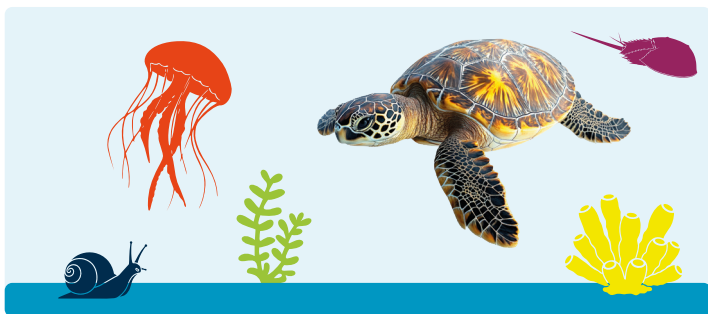
### Fun Facts!

- can migrate **over 10,000 miles a year**
- sand temperature of a nest determines the gender of hatchlings—**warmer sand produces females, while cooler sand produces males**



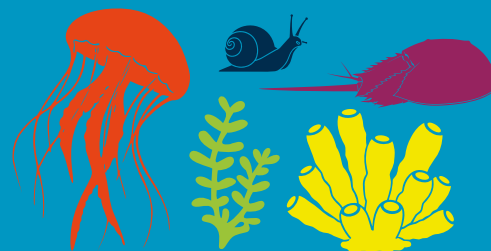
## Where do they live?

Sea turtles live in almost every ocean, primarily **inhabiting tropical and subtropical waters**. They occupy diverse marine habitats, including shallow coastal waters, lagoons, bays, and the open ocean, while nesting on sandy beaches.



## What do they eat?

Sea turtles have varied diets depending on their species and age, ranging from **strict herbivores to specialized carnivores**. Key foods include **jellyfish, seagrass, sponges, crabs, and mollusks**.



Scan to learn how to build the sea turtle and for more creative inspiration!

