

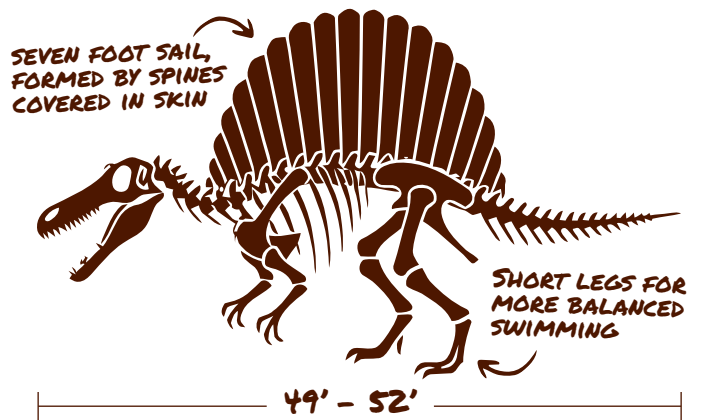
Spinosaurus

Spinosaurus aegyptiacus

Spinosaurus was a **massive semi-aquatic predator** that lived during the Late Cretaceous period, roughly 95 million years ago.

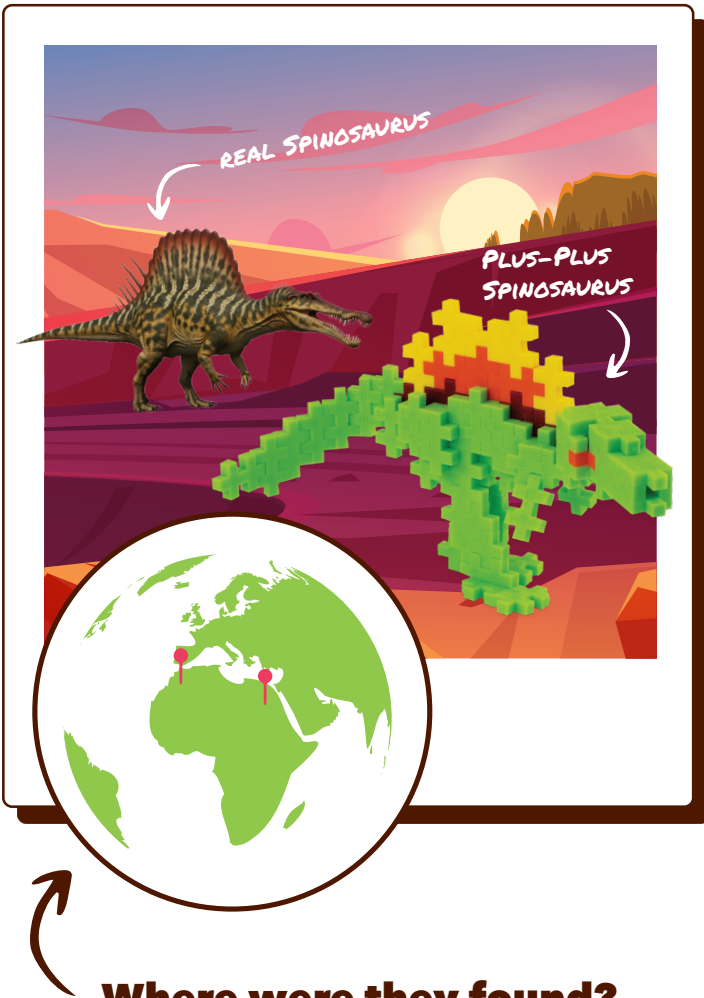
Spinosaurus had a lifespan of **25 - 30 years**

What did they look like?



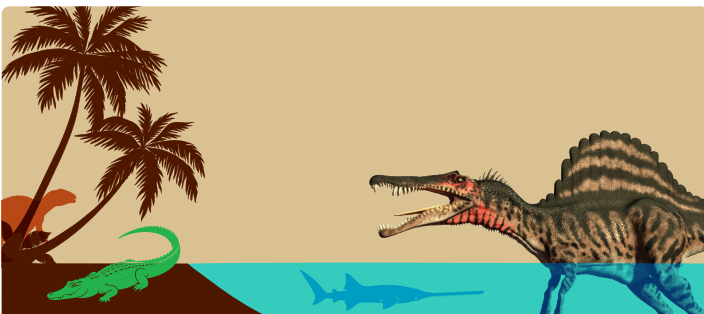
Fun Facts!

- they had **crocodile-like snouts** for eating large fish
- the only true swimming dinosaur, with a long, flat, paddle-like tail



Where were they found?

Spinosaurus fossils are primarily found in **North Africa**, specifically within the **Cretaceous-aged rocks of the Kem Kem Beds in Morocco and the Bahariya Oasis in Egypt**. The first fossils were discovered in the autumn of 1912 in Egypt.



Scan to learn how to build the spinosaurus and for more creative inspiration!



What did they eat?

Spinosaurus were **carnivorous predators**, with their diet consisting predominantly of large fish, such as **sawfish** and prehistoric **crocodiles**. It may have scavenged or hunted **smaller dinosaurs** that came too close to the water's edge.

